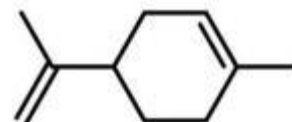


Technical Data Sheet

Basic information

Chemical name	Dipentene	Formula	C ₁₀ H ₁₆
Synonyms	/		
CAS.No.	68956-56-9/ 138-86-3		
EINECS No.	273-309-3/205-341-0		
Molecular weight	136.24		

Chemical structure



Physical properties

Appearance Yellow or colorless transparent liquid

Specification

Items	Specification
Appearance	Yellow or colorless transparent liquid
Relative density, D ₂₀ 4	0.8470 ~ 0.8700
Refractive index, N ₂₀	1.4600 ~ 1.4900
Boiling range, %	≥95.00 (165C~190C)

Application

- It is mainly used to replace D-limonene in paint dilution, heavy oil cleaning, and furniture cleaning. Also produces terpene resins.
- It can be used as anti-skinning agent, dispersing agent, wetting agent and foaming agent.
- Also can be used in household cleaning products. Dipentene EXC is a by-product of camphene, which can be used to synthesize montane and p-cymene

Safety on transportation

It belongs to class 3 dangerous goods, always refer to MSDS.

Packing, Storage and handling

175kg/iron drum, 80 drums (14mt)/20'FCL

Keep tightly closed, store in a cool dry place.

Please refer to the Materials Safety Data Sheet (MSDS) for the handling methods.

The information above is believed to be accurate and represents the best information currently available to us. However, In no event shall we be liable for any claims, losses, or damages of any third party resulting from its use.

Issue Date: 1st,8,2020